



*Hogar de Playa*  
PLAYA SAN BENITO KM 24.5

• HOGAR DE PLAYA •



• PLAYA SAN BENITO • KM 24.5







Holidays have never been as fun and cozy as in your home by the beach, in a safe and relaxing environment with everything your family needs to spend the best moments of rest together.

A space envisioned for the whole family where young and old alike can enjoy all the amenities the condominium with a beach club has to offer. The children will have fun in the pools and play areas while you spend an incredible afternoon enjoying a beautiful beachside sunset in a fully furnished and comfortable space.

*Hogar  
de Playa*



# LOCATION

We are located on kilometer 24.5 of the Chicxulub-Telchac highway, a privileged location thanks to its beautiful white sand beaches and calm emerald sea.

You will have all kinds of services very close to you, such as restaurants, convenience stores, and everything needed for you to enjoy with your family.

- **25 MIN** From Progreso
- **14 MIN** From the Xcambó archaeological site
- **10 MIN** From Marina Telchac
- **37 MIN** From Merida





8 Three-story buildings

72 Apartments

+ 20 Amenities

Private beach club

168 Parking spaces

Hogar  
de Playa





## DESCRIPTIVE MEMORY

The Development consists of 8 three-story buildings, each with their own rooftop, which will house 72 two- and three-bedroom apartments, with multiple amenities such as terraces, pools and play areas as well as a private beach club. It also has a parking lot with a 168 vehicle capacity and individual storage units to be used exclusively by the apartments.

ESTAS IMÁGENES SON DE CARÁCTER ILUSTRATIVO, PUEDEN VARIAR EN EL DESARROLLO DEL PROYECTO SIN NINGUNA RESPONSABILIDAD PARA EL DESARROLLADOR



## LUXURY FINISHES

- Plaster finish walls
- Marble Floors
- Granite kitchen bar
- Marble countertops

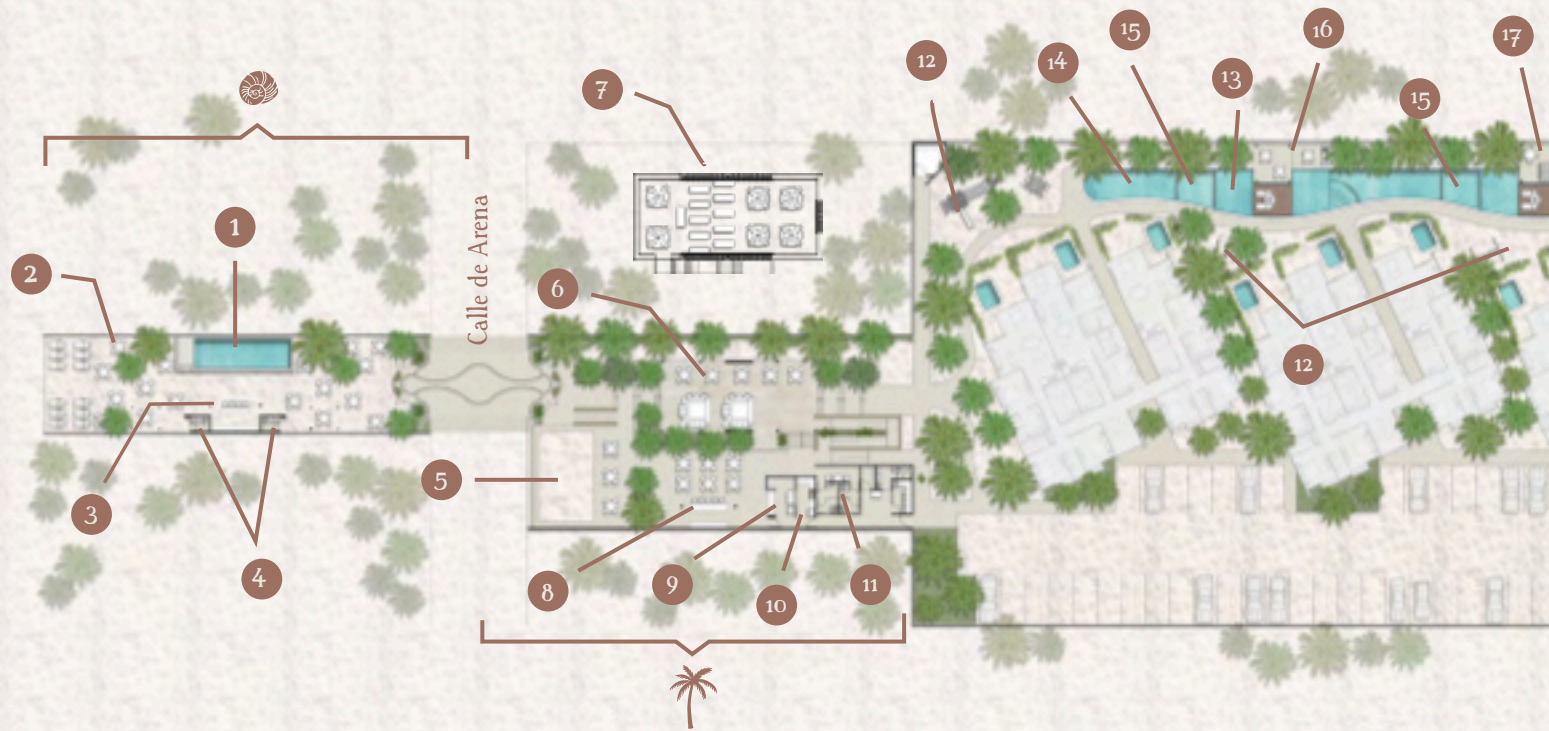
THESE IMAGES ARE FOR ILLUSTRATIVE PURPOSES ONLY. THEY MAY VARY DURING THE PROJECT'S DEVELOPMENT WITHOUT ANY LIABILITY FOR THE DEVELOPER





THESE IMAGES ARE FOR ILLUSTRATIVE PURPOSES ONLY. THEY MAY VARY DURING THE PROJECT'S DEVELOPMENT WITHOUT ANY LIABILITY FOR THE DEVELOPER





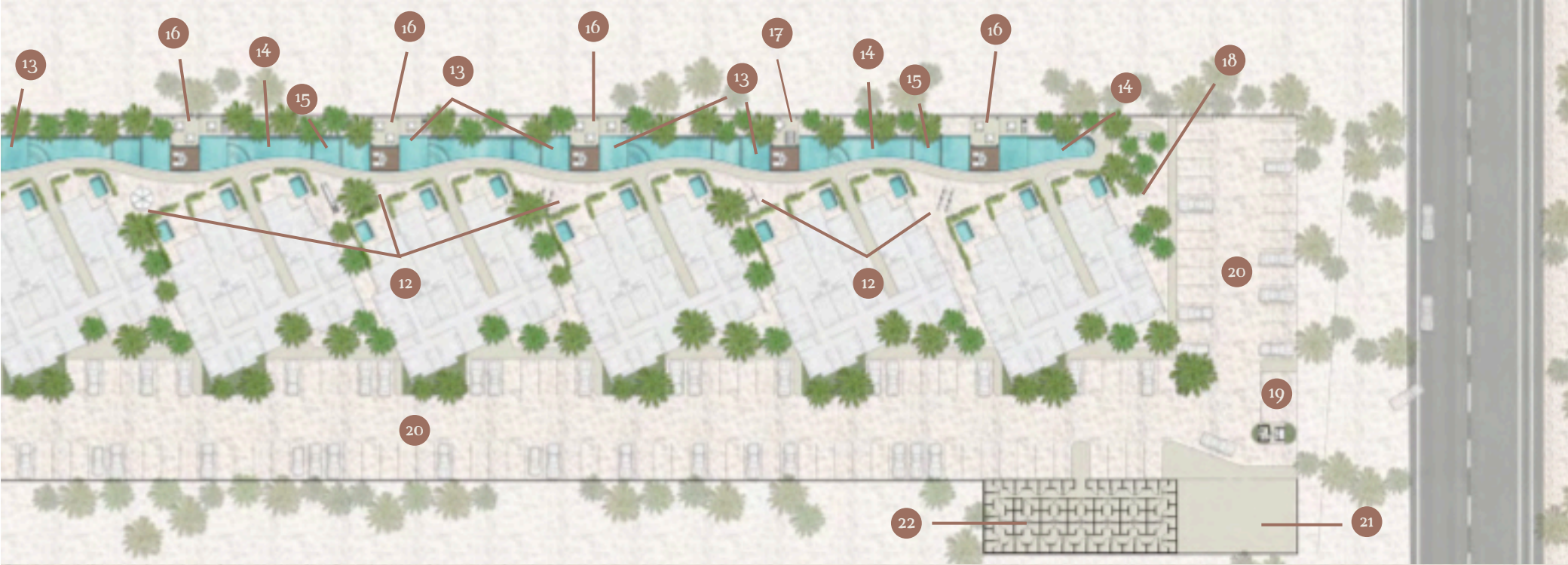
## BEACH CLUB

- 1 Pool
- 2 Palapas and beach lounge chairs
- 3 Beach bar
- 4 Restrooms

## CLUBHOUSE

- 5 Children's sandbox
- 6 Family Terrace (ground floor)
- 7 Social terrace for adults (upper floor)
- 8 Bar
- 9 Snack bar
- 10 Kitchen
- 11 Restrooms





## AMENITIES

12 Children's playground

13 Water mirrors

14 Deep pool

15 Kiddie pool

16 Terrace with grills

17 Terrace with foosball table

18 Children's soccer field

19 Access control booth

20 Parking

21 Commercial area

22 Storage units





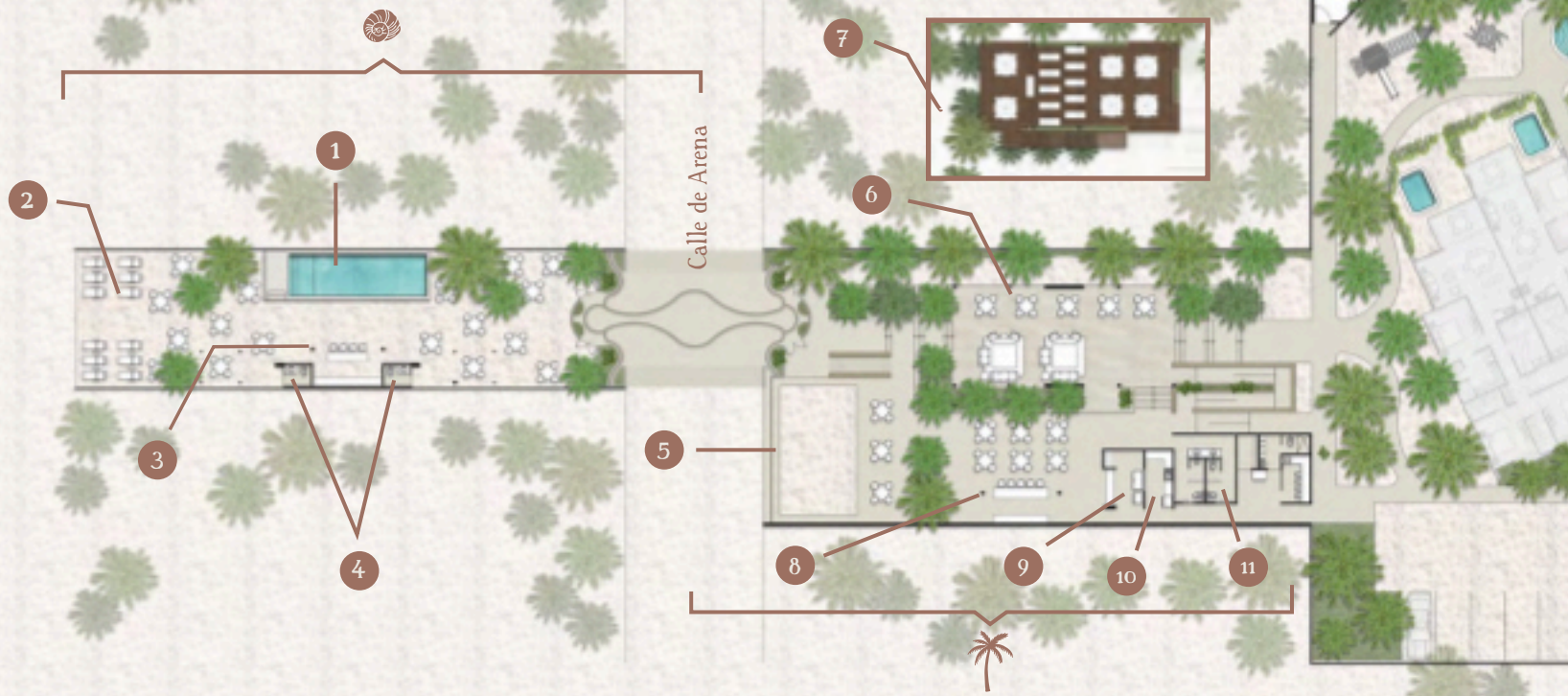
THESE IMAGES ARE FOR ILLUSTRATIVE PURPOSES ONLY. THEY MAY VARY DURING THE PROJECT'S DEVELOPMENT WITHOUT ANY LIABILITY FOR THE DEVELOPER





THESE IMAGES ARE FOR ILLUSTRATIVE PURPOSES ONLY. THEY MAY VARY DURING THE PROJECT'S DEVELOPMENT WITHOUT ANY LIABILITY FOR THE DEVELOPER





## BEACH CLUB

- 1 Alberca
- 2 Palapas y camastros
- 3 Beach bar
- 4 Baños

## CLUBHOUSE

- 5 Arenero infantil
- 6 Terraza familiar (planta baja)
- 7 Terraza social de adultos (planta alta)
- 8 Bar
- 9 Snack bar
- 10 Cocina
- 11 Baños





THESE IMAGES ARE FOR ILLUSTRATIVE PURPOSES ONLY. THEY MAY VARY DURING THE PROJECT'S DEVELOPMENT WITHOUT ANY LIABILITY FOR THE DEVELOPER





THESE IMAGES ARE FOR ILLUSTRATIVE PURPOSES ONLY. THEY MAY VARY DURING THE PROJECT'S DEVELOPMENT WITHOUT ANY LIABILITY FOR THE DEVELOPER









THESE IMAGES ARE FOR ILLUSTRATIVE PURPOSES ONLY. THEY MAY VARY DURING THE PROJECT'S DEVELOPMENT WITHOUT ANY LIABILITY FOR THE DEVELOPER



## Penthouse

- Center Penthouse (2 bedrooms+rooftop)
- North Penthouse (3 bedrooms+rooftop)
- South Penthouse (3 bedrooms+rooftop)

## Level 1

- Center Apartment (2 bedrooms)
- North Apartment (3 bedrooms)
- South Apartment (3 bedrooms)

## Pentgarden

- Center Pentgarden (2 bedrooms)
- North Pentgarden (3 bedrooms)
- South Pentgarden (3 bedrooms)





# PENTGARDEN



## NORTH & SOUTH PENTGARDEN

CONSTRUCTION SIZE: 1,406 FT<sup>2</sup> 3 BEDROOMS

GARDEN SIZE: 358 FT<sup>2</sup>

2 PARKING SPACES STORAGE ROOM

- Living room
- Kitchen
- Dining room
- Master bedroom with full bathroom and walk-in closet
- Second bedroom with full bathroom and closet
- Guest bedroom with closet
- Guest bathroom
- Utility room with full bathroom
- Terrace
- Private pool
- 



## CENTER PENTGARDEN

CONSTRUCTION SIZE: 1,101 FT<sup>2</sup> 2 BEDROOMS

GARDEN SIZE: 265 FT<sup>2</sup>

2 PARKING SPACES STORAGE ROOM

- Living Room
- Dining Room
- Kitchen
- Master bedroom with full bathroom and walk-in closet
- Second bedroom with closet
- Guest bathroom
- Utility room with full bathroom
- Terrace
- Private pool
-





THESE IMAGES ARE FOR ILLUSTRATIVE PURPOSES ONLY. THEY MAY VARY DURING THE PROJECT'S DEVELOPMENT WITHOUT ANY LIABILITY FOR THE DEVELOPER.



# FIRST LEVEL



## NORTH & SOUTH APARTMENT

CONSTRUCTION SIZE: 1,406 FT<sup>2</sup> • 3 BEDROOMS  
2 PARKING SPACES • STORAGE ROOM

- Living Room
- Dining Room
- Kitchen
- Master bedroom with full bathroom and walk-in closet
- Second bedroom with full bathroom and closet
- Guest bedroom with closet
- Guest bathroom
- Utility room with full bathroom
- Terrace



## CENTER APARTMENT

CONSTRUCTION SIZE: 1,101 FT<sup>2</sup> • 2 BEDROOMS  
2 PARKING SPACES • STORAGE ROOM

- Living Room
- Dining Room
- Kitchen
- Master bedroom with full bathroom and walk-in closet
- Second bedroom with closet
- Guest bathroom
- Utility room with full bathroom
- Terrace





THESE IMAGES ARE FOR ILLUSTRATIVE PURPOSES ONLY. THEY MAY VARY DURING THE PROJECT'S DEVELOPMENT WITHOUT ANY LIABILITY FOR THE DEVELOPER



# PENTHOUSE

---



## NORTH & SOUTH PENTHOUSE

CONSTRUCTION SIZE: 1,712 FT<sup>2</sup> • 3 BEDROOMS

ROOFTOP: 468 FT<sup>2</sup>

2 PARKING SPACES • STORAGE ROOM

- Living room
- Kitchen
- Dining room
- Master bedroom with full bathroom and walk-in closet
- Second bedroom with full bathroom and closet
- Guest bedroom with closet
- Guest bathroom
- Utility room with full bathroom
- Terrace
- Rooftop



# PENTHOUSE

---



## CENTER PENTHOUSE

CONSTRUCTION SIZE: 1,378 FT<sup>2</sup> • 2 BEDROOMS

ROOFTOP: 505 FT<sup>2</sup>

2 PARKING SPACES • STORAGE ROOM

- Living room
- Kitchen
- Dining room
- Master bedroom with full bathroom and walk-in closet
- Guest bedroom with closet
- Guest bathroom
- Utility room with full bathroom
- Terrace
- Rooftop





THESE IMAGES ARE FOR ILLUSTRATIVE PURPOSES ONLY. THEY MAY VARY DURING THE PROJECT'S DEVELOPMENT WITHOUT ANY LIABILITY FOR THE DEVELOPER



THESE IMAGES ARE FOR ILLUSTRATIVE PURPOSES ONLY. THEY MAY VARY DURING THE PROJECT'S DEVELOPMENT WITHOUT ANY LIABILITY FOR THE DEVELOPER.





# SECURITY AND URBANIZATION

---

- 24/7 Security Booth
- Perimeter fence
- Fingerprint access for service personnel
- Security cameras
- Digital guest invitation system
- Street lighting with LED technology
- Architectural lighting in common areas
- Architectural landscaping



THESE IMAGES ARE FOR ILLUSTRATIVE PURPOSES ONLY. THEY MAY VARY DURING THE PROJECT'S DEVELOPMENT WITHOUT ANY LIABILITY FOR THE DEVELOPER